



**OAKVIEW  
RESTORATIONS**

Dental implant laboratory

# Spring Newsletter

Spring 2016

## Welcome to our first newsletter

As a valued client of ours, we want to keep you informed of the latest company and product developments that could benefit your business and will be circulating our newsletters to you on a quarterly basis.

## New Mobile Denture Service

We will shortly be launching a new service aimed at residents of local Care Homes. Roy, our dedicated Clinical Dental Technician will be undertaking regular visits to Care Homes in the local area to provide a new service to residents who are totally edentulous. During his planned visits, he will be meeting with residents to assess their needs and offer the following services:

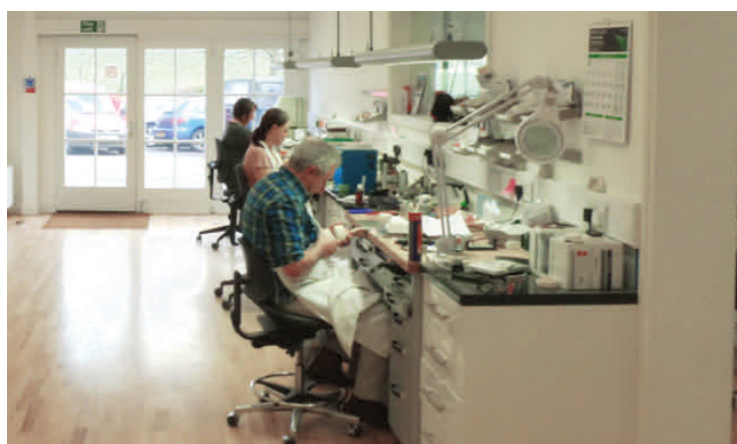
- Denture repairs
- Relines
- Cleaning Service
- Totally new dentures

To register an interest in this service, please contact us directly **01494 569466**.



*"Oakview are a very friendly and responsive team. Great quality, first class service and excellent turnaround time. Overall, an exceptional lab."*

*- Dr R B Johnson,  
BDS, Ipswich*



Our Laboratory in Saunderton, Bucks

## In This Issue

- New Mobile Denture Service for Care Homes
- New Materials we are working with
- New Denture Clinic opening
- Meet the Oakview Team



Ceramil Zolid FX—Super High Translucent Zirconia

## Ceramil Zolid FX

At Oakview, we pride ourselves in using only the best quality materials. We work with Ceramil Zolid FX which are white and pre-shaped super high translucent zirconia blanks. They are used for monolithic or anatomically reduced anterior premium restorations and up to 3 unit bridges in the molar region.

The excellent translucent values of the high performance ceramic make it a strong alternative to lithium disilicate without having to do without the outstanding technical characteristics of zirconia.

The result is highly aesthetic restorations with long-term strength and stability. The material is processed and used intraorally without additional expense in the same way as with zirconia restorations with the use of commercially available luting material.



**DENTAL TECHNOLOGY SHOWCASE 2016**  
 22nd & 23rd April 2016,  
 Nec Birmingham

We will be attending the Dental Technology Show during April to discover the latest technologies and products available to the dental industry.

Of particular interest to us is digital workflow from intra oral impression scanning to 3D printing of working models.

We are also looking to source a second scanner to cope with the ever increasing CAD/CAM available indications and materials.

**DENTAL TECHNOLOGY SHOWCASE 2016**  
 22nd & 23rd April 2016,  
 Nec Birmingham

## Oakview to Launch new Denture Clinic

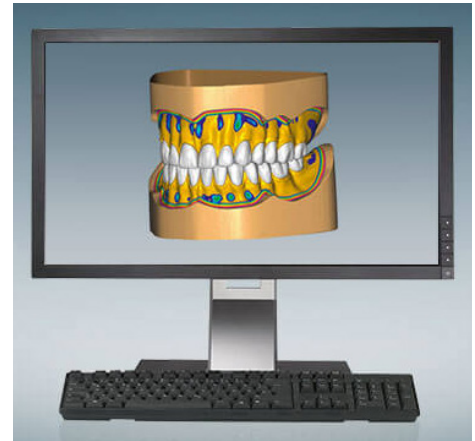
We are excited to announce that we will be launching a new Denture Clinic at our laboratory in Saunderton, in June and will provide more detail in our next newsletter.

### ceramill® d-flow

Ceramill D-Flow is an upgrade module for designing customised, precise, full dentures.

It is used after model fabrication and articulating using the manual procedure and replaces all working stages up to the wax try-in, with a seamless digital workflow.

The core benefits of this module are the reduction of time-consuming, manual re-working resulting in highly aesthetic results and customisable gingiva forming.



Ceramill Mind Upgrade Module for designing full dentures

### ceramill® microshell

For temporary restorations needed for immediate treatment, we use Ceramill Microshell which is an upgrade module for the fabrication of thin, patient-specific eggshell restorations. It is an aesthetic, high quality, immediate treatment—even before preparation. A virtual preparation margin is defined on the as yet unprepared teeth on the scanned anatomical model.

The temporary restoration, designed later, is produced as a shell of uniform thickness and the outer form of the unprepared tooth of the patient situation or library teeth. The final version can be quickly fabricated with the aid of the temporary eggshell restoration immediately after preparation.





**Jason Foster**  
Partner

Gold casting and implant specialist with 20 years' experience and knowledge of virtually all implant systems. Jason is also our CAD/CAM expert and is a member of the Association of Dental Implantology (ADI).



**Nick Harris**  
Partner

With vast experience of many ceramic and composite systems our porcelain and composite specialist, Nick, graduated from the Eastman Dental Hospital in 1979.



**Jim Webb**  
Partner

Jim graduated with distinction from the Royal Dental Hospital in 1981 and is a highly experienced ceramist using both conventional and pressed methods. He joined Oakview as a partner in 2003.



**Roy Davies**  
Partner

A master craftsman and expert prosthetics technician, Roy also operates as Lead Technical Consultant and Trainer for Myerson UK & Europe and Panadent UK. He publishes papers regularly and his renowned "True-to-life" dentures seminars are always well attended. Roy's aim is to achieve the ultimate in aesthetics for removable dentures.



**Stuart Epstein**  
Partner

Stuart joined the team in April 2011. His skill set covers crown and bridge and a comprehensive knowledge of most implant systems. His vast experience also includes CAD/CAM and pressable ceramics such as e.max.



**Tracey Godfrey**

Tracey joined Oakview in August 2011 as an experienced dental technician providing a valuable support role throughout the lab.



**Andy Davis**

Andy joined the prosthetics team in 2012. Andy brings vast experience with his near 40 year career including a two year stint in the Falklands.



**Mike Barr**

Mike has a varied background in business and client facing roles. He joined the team in 2013 to look after Oakview's increasing customer base.



**John Atkinson, Peter Vittle  
& Chris Schwier**

Our dedicated delivery drivers, John (pictured), Peter and Chris facilitate our quick turnaround times, ensuring reliability and punctuality.

Units 1 & 2 Ministry  
Wharf,  
Wycombe Road,  
Saunderton,  
Bucks,  
HP14 4HW.

01494 569466 

[info@oakviewrestorations.co.uk](mailto:info@oakviewrestorations.co.uk)

[www.oakviewrestorations.co.uk](http://www.oakviewrestorations.co.uk)

If you are particularly interested in any of the articles featured within this newsletter and would like to find our more information, please contact us directly on **01494 569466** or email us on **[info@oakviewrestorations.co.uk](mailto:info@oakviewrestorations.co.uk)**